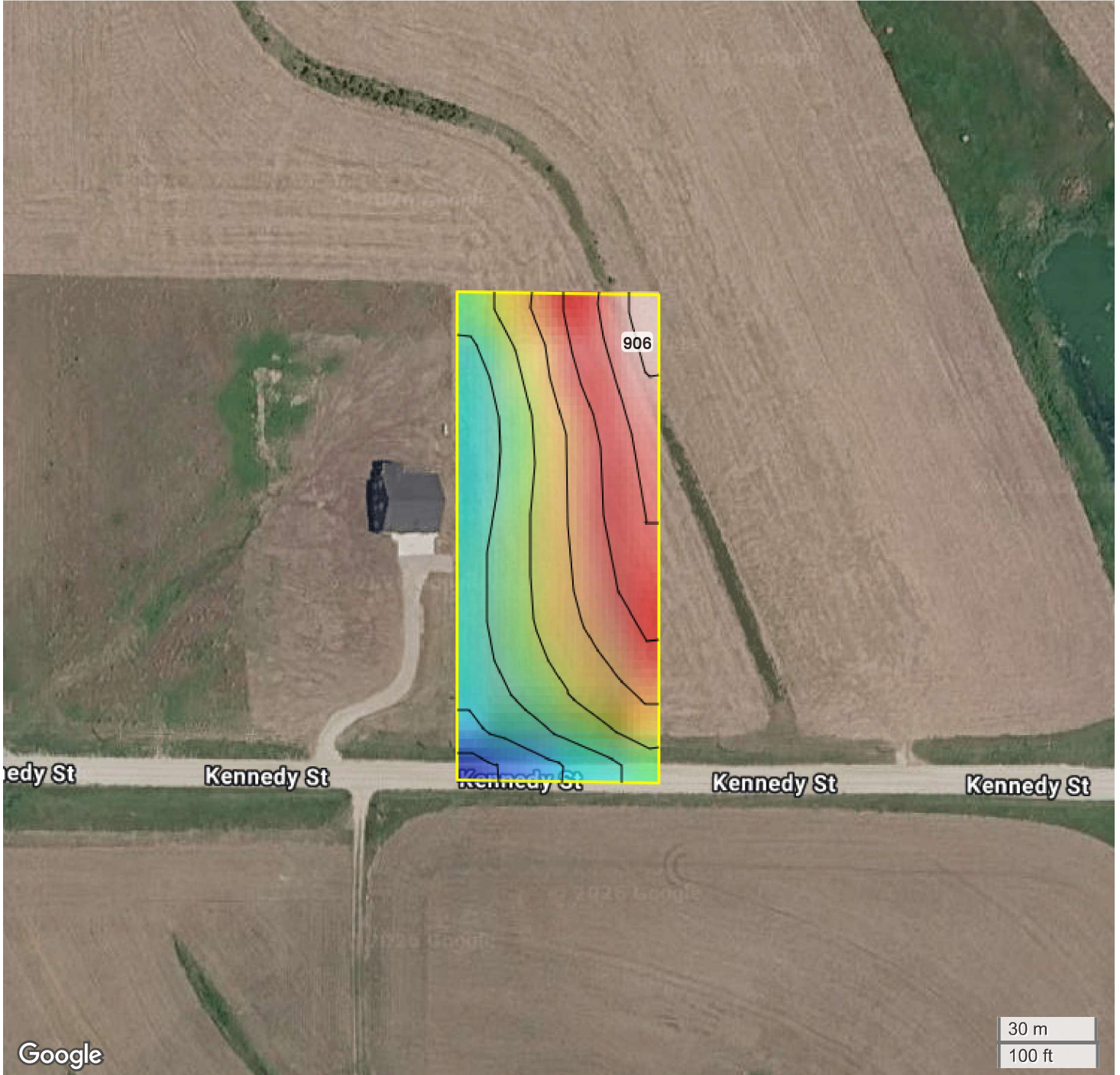




MCGINNIS - LOT 4 (2.20 AC TOTAL, 2.00 AC TILLABLE)

TOPOGRAPHY



Google



Center: 41.350488, -93.493516

27-76N-23W

**Lincoln Township
Warren County, IA**

| | |
|---------------|--------------|
| Source: | USGS 10m DEM |
| Interval(ft): | 3 |
| Max: | 906.0 ft |
| Min: | 885.0 ft |
| Range: | 21.0 ft |
| Average: | 895.5 ft |



FarmWorth, LLC makes no warranties, express or implied, regarding the accuracy of any information provided through FarmWorth.com. User is solely responsible for independently verifying all information prior to use and waives any claims against FarmWorth, LLC arising from inaccuracies in such information.